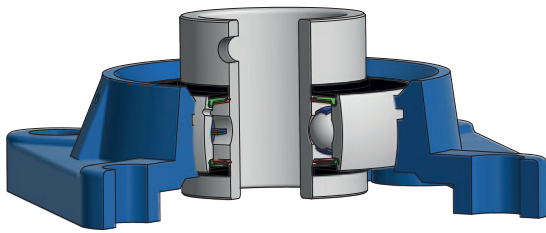
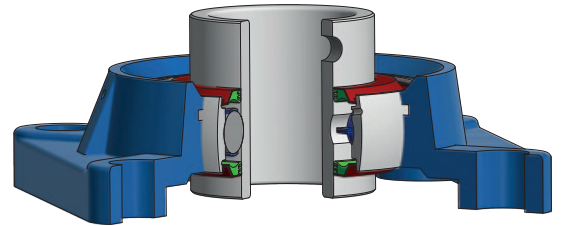




# HOUSING UNIT – TYPE FG / SG / FM

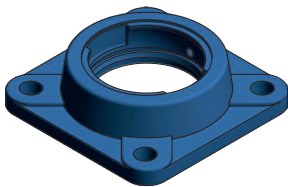
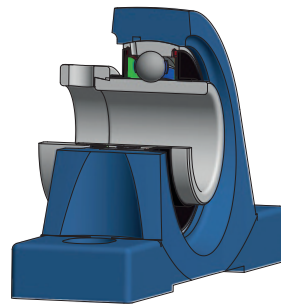


FGC208S

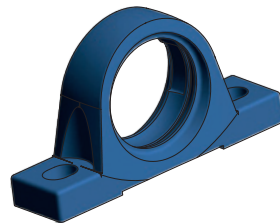


FGC208R3

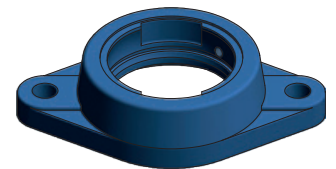
SGA208S



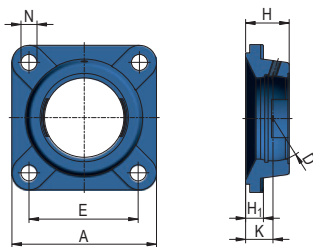
FG



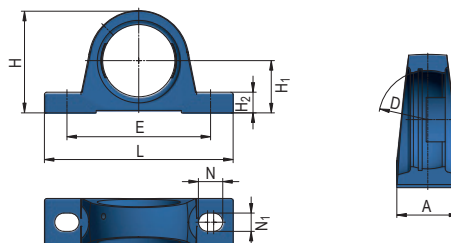
SG



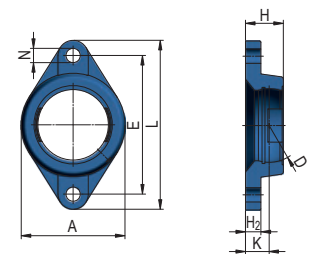
FM



FG







SG





FM

## HOUSING UNIT – TYPE FG / SG / FM

Square Flanged Housing Unit - FG type										
Dimensions mm							Weight kg	Housing Unit Designation	Designation of Housing Unit with Bearing UC	
A	D	E	H	H <sub>1</sub>	N	K			ZVL	
86	40	64	25,5	11	12	15	1	FG203	FGC203	
86	47	64	25,5	11	12	15	0,95	FG204	FGC204	
95	52	70	27	14	12	16	1,2	FG205	FGC205	
108	62	83	31	14,3	12	18	1,89	FG206	FGC206	
117	72	92	34	15,5	14	19	2,39	FG207	FGC207	
130	80	102	36	15,5	16	21	2,79	FG208	FGC208	
137	85	105	38	17,5	16	22	3,18	FG209	FGC209	
143	90	111	40	17,5	16	22	3,68	FG210	FGC210	
162	100	130	43	19,5	19	25	3,4	FG211	FGC211	
175	110	143	48	19,5	19	29	4,17	FG212	FGC212	
187	120	149	50	23	19	30	5,32	FG213	FGC213	

Pillow Block Housing Unit - SG type										
Dimensions mm							Weight kg	Housing Unit Designation	Designation of Housing Unit with Bearing UC	
A	D	E	L	H	H <sub>1</sub>	H <sub>2</sub>			ZVL	
36	40	96	127	60	30,2	13	0,67	SG203	SGC203	
38	47	95	127	65	33,3	14	0,79	SG204	SGC204	
38	52	105	140	71	36,5	15	0,91	SG205	SGC205	
48	62	121	165	83	42,9	17	1,56	SG206	SGC206	
48	72	127	167	93	47,6	18	1,86	SG207	SGC207	
54	80	137	184	98	49,2	18	2,21	SG208	SGC208	
54	85	146	190	106	54	20	2,47	SG209	SGC209	
60	90	159	206	114	57,2	21	3,18	SG210	SGC210	
60	100	171	219	126	63,5	23	3,95	SG211	SGC211	
70	110	184	241	138	69,8	25	5,1	SG212	SGC212	
70	120	203	264	151	76,2	27	6,2	SG213	SGC213	

Oval Flanged Cast Housing Unit - FM type											
Dimensions mm								Weight kg	Housing Unit Designation	Designation of Housing Unit with Bearing UC	
A	D	E	L	H	K	H <sub>2</sub>	N			ZVL	
57	40	76,5	99	25,5	15	11	12	0,3	FM203	FMC203	
60	47	90	113	25,5	15	14	12	0,35	FM204	FMC204	
68	52	99	130	27	16	13	16	0,44	FM205	FMC205	
80	62	117	148	31	18	13	16	0,61	FM206	FMC206	
90	72	130	161	34	19	14	16	0,89	FM207	FMC207	
100	80	144	175	36	21	14	16	1,15	FM208	FMC208	
108	85	148	188	38	22	15	19	1,25	FM209	FMC209	
115	90	157	197	40	22	15	19	1,44	FM210	FMC210	
130	100	184	224	43	25	18	19	2,47	FM211	FMC211	
140	110	202	250	48	29	18	23	3,35	FM212	FMC212	
155	120	210	258	50	30	22	23	4,15	FM213	FMC213	