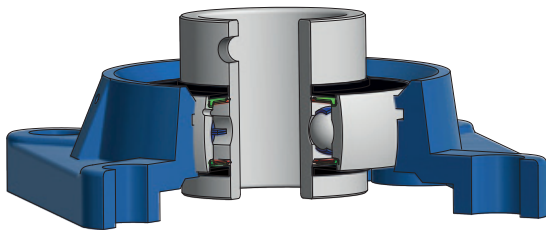
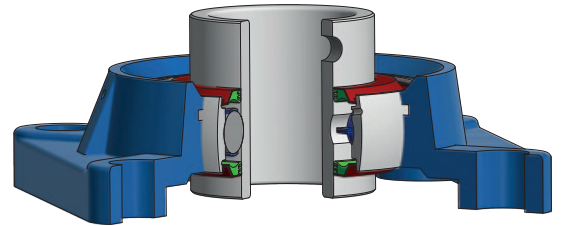


# PRÍRUBOVÉ LIATINOVÉ TELESÁ TYPU FG / SG / FM

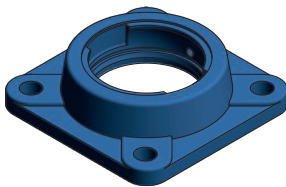
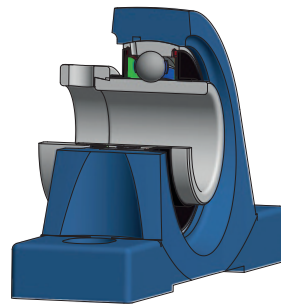


FGC208S

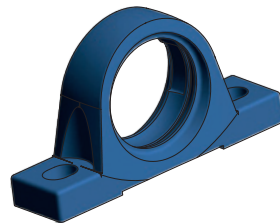


FGC208R3

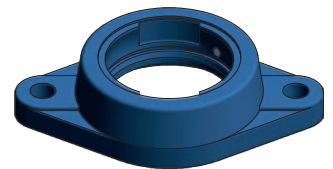
SGA208S



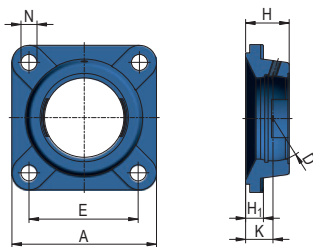
FG



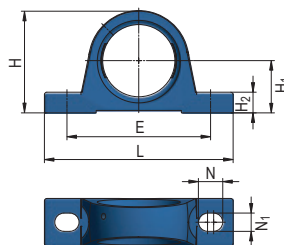
SG



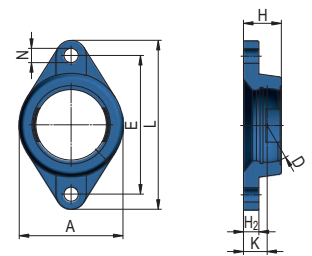
FM



FG




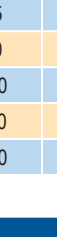
SG





FM

## PRÍRUBOVÉ LIATINOVÉ TELESÁ TYPU FG / SG / FM

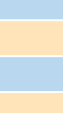

### Štvorcové prírubové liatinové telesá typu FG

Rozmery telesa mm							Hmotnosť kg	Označenie telesa	Označenie telesa s ložiskom UC
A	D	E	H	H <sub>1</sub>	N	K			ZVL
86	40	64	25,5	11	12	15	1	FG203	FGC203
86	47	64	25,5	11	12	15	0,95	FG204	FGC204
95	52	70	27	14	12	16	1,2	FG205	FGC205
108	62	83	31	14,3	12	18	1,89	FG206	FGC206
117	72	92	34	15,5	14	19	2,39	FG207	FGC207
130	80	102	36	15,5	16	21	2,79	FG208	FGC208
137	85	105	38	17,5	16	22	3,18	FG209	FGC209
143	90	111	40	17,5	16	22	3,68	FG210	FGC210
162	100	130	43	19,5	19	25	3,4	FG211	FGC211
175	110	143	48	19,5	19	29	4,17	FG212	FGC212
187	120	149	50	23	19	30	5,32	FG213	FGC213

### Stojaté liatinové telesá typu SG

Rozmery telesa mm							Hmotnosť kg	Označenie telesa	Označenie telesa s ložiskom UC
A	D	E	L	H	H <sub>1</sub>	H <sub>2</sub>			ZVL
36	40	96	127	60	30,2	13	0,67	SG203	SGC203
38	47	95	127	65	33,3	14	0,79	SG204	SGC204
38	52	105	140	71	36,5	15	0,91	SG205	SGC205
48	62	121	165	83	42,9	17	1,56	SG206	SGC206
48	72	127	167	93	47,6	18	1,86	SG207	SGC207
54	80	137	184	98	49,2	18	2,21	SG208	SGC208
54	85	146	190	106	54	20	2,47	SG209	SGC209
60	90	159	206	114	57,2	21	3,18	SG210	SGC210
60	100	171	219	126	63,5	23	3,95	SG211	SGC211
70	110	184	241	138	69,8	25	5,1	SG212	SGC212
70	120	203	264	151	76,2	27	6,2	SG213	SGC213

### Oválne prírubové liatinové telesá typu FM

Rozmery telesa mm								Hmotnosť kg	Označenie telesa	Označenie telesa s ložiskom UC
A	D	E	L	H	K	H <sub>2</sub>	N			ZVL
57	40	76,5	99	25,5	15	11	12	0,3	FM203	FMC203
60	47	90	113	25,5	15	14	12	0,35	FM204	FMC204
68	52	99	130	27	16	13	16	0,44	FM205	FMC205
80	62	117	148	31	18	13	16	0,61	FM206	FMC206
90	72	130	161	34	19	14	16	0,89	FM207	FMC207
100	80	144	175	36	21	14	16	1,15	FM208	FMC208
108	85	148	188	38	22	15	19	1,25	FM209	FMC209
115	90	157	197	40	22	15	19	1,44	FM210	FMC210
130	100	184	224	43	25	18	19	2,47	FM211	FMC211
140	110	202	250	48	29	18	23	3,35	FM212	FMC212
155	120	210	258	50	30	22	23	4,15	FM213	FMC213